

# RADIANCE

No. 91 (January 1, 2023)

January/February 2023

Nichiren Buddhist Kannon Temple of Nevada  
1600 E. Sahara Ave., Las Vegas, NV 89104-3488  
Tel/Fax: (702)866-5956  
[www.kannon-temple-nevada.org](http://www.kannon-temple-nevada.org)  
[kannontemplenv@gmail.com](mailto:kannontemplenv@gmail.com)

Follow us on  

## Happy New Year!

According to the Chinese calendar, this is the Year of the **Water Rabbit**, which is the fourth zodiac sign. This year will likely be filled with creativity and resourcefulness. The **Fourth Star** moves to the middle this year, predicts improved communication and interpersonal relationships. The unlucky directions are NW, and SE, thus best not to relocate in any direction. Furthermore, from the NW of the house, it would be best not to remodel or stay too long in any direction.



## COVID-19 Update

Good News! The State of Nevada is gradually lifting restrictions, therefore Kannon Temple will open for in-person service. We request that everyone gets vaccinated, wear a mask, bring their own DHARMA book, and social distance as much as possible. There will be no meal after service so please do not bring anything. Services will still be broadcasted online via **Zoom**. For those interested in participating, please contact the temple to obtain meeting ID and password. Donations can be made through **Zellepay.com** to: [kannontemplenv@gmail.com](mailto:kannontemplenv@gmail.com).

## New Year's Day Service

Jan. 1<sup>st</sup>, **10:30 a.m.** (Sun)

**Happy New Year!** Come join us **in-person** or **online** for the first service of the New Year! The special prayers you have submitted will be read at that time to bless you for the upcoming year. Rev. Kanai will continue to ready your prayers for seven days. If you have not received the form, please contact the temple or visit the website.

Traditional *O-toso* (medicinal *sake*) will be served after the service. Special New Year *ofudas* will be mailed to those who have requested prayers.

## Hoshimatsuri / Setsubun Service

Feb. 5<sup>th</sup>, **10:30 a.m.** (Sun)

*Setsubun* is the eve of spring and also the Lunar New Year's Eve. Those born in the **Year of the Rabbit** hopefully will be able to toss roasted soy beans to chase out negative beings and cleanse your soul.

Those born under the sign of the **Rabbit, 2023, 2011, 1999, 1987, 1975, 1963, 1951 and 1939**, please contact the temple since they will wear special *kami-shimo* outfit. Non-members are also welcome.

## Sakyamuni Buddha's Nirvana

### Nichiren Shonin's Birthday

Feb. 12<sup>th</sup>, **10:30 a.m.** (Sun)

February 15th is when Sakyamuni Buddha entered into Pari-Nirvana. February 16th is Nichiren Shonin's birthday. We are celebrating both occasions to show our appreciation towards them for their unwavering work in teaching the True Dharma, which has now spread all over the world. Let us show our gratitude by chanting the Lotus Sutra and *Odaimoku* together.

## Electronic Newsletter

If you wish to receive this bi-monthly newsletter electronically, please email temple with your request at [kannontemplenv@gmail.com](mailto:kannontemplenv@gmail.com). We are in the process of moving many processes online, which will help reduce temple expense. If you have any questions, please contact the temple.

## Monthly Amulets ~ Reminder ~

With the difficulty in receiving monthly amulets from Japan, Kannon Temple will be creating its own special amulet with donation remaining the same at \$5 per month per amulet or \$60 per year per amulet. Please contact the temple either by mail or email with your name and number of requested amulet(s). Donations can be made via check, Zellepay, or PayPal.

New amulets will be mailed out starting January 2023.

## Safe Driving Blessing

Jan. 22<sup>nd</sup>, **10:30 a.m.** (Sun)

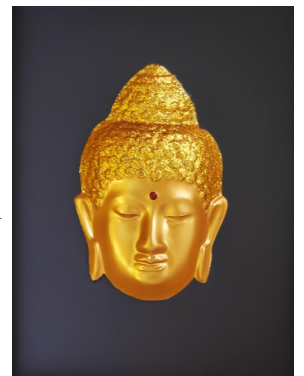
We will hold the annual "Safe Driving" Blessing Ceremony on January 22nd. Please fill out the enclosed form with all the necessary information and send back to the temple with your donation. Service will be conducted **online** this year.

At the end of the year, please send back only the **paper** amulet and keep the plastic jacket. We will properly dispose during the *Otakiage* Burning Ceremony some time in 2023.

## Buddha's Eyes

Shoda Kanai

Please take a quick look at the picture to the right. Are the Buddha's eyes open or closed? I always ask this question to all visitors to the temple. Some say closed, while others say open. It does look closed, but His eyes are open.



Many Buddha statues and images portray the same eye slits as if He is in meditation. There is also a dot between His eyes, which represents the third eye. The eyes represents the inner view (third eye) and outer view (physical eyes). When properly eye-opened, ⇨

⇐the Buddha resides within the statue and observes all. Un-eye-opened statues are just an art piece.

With the inner eye, Buddha sees within Himself, meaning that He reviews the Dharma and brings forth the wisdom He found after attaining Enlightenment. The outer eyes see this physical world and all phenomena contained within. With these two eyes, Buddha sees all especially your inner self. With His compassion, he can assist in guiding you to the correct path. Sometimes people listen but most times they do not. For those who listen, Buddha guides them to a teacher for further study and practice.

As we practice, we too are developing our Buddha eyes so that we can look into ourselves and observe our nature and adjust accordingly to further advance towards becoming a Buddha. With our outer eyes, we slowly start to see the world around us just as it is. We are training to see past the defilements that comes from the three poisons of anger, greed, and ignorance. The three poisons distort the world around us, creating the condition for our suffering and the suffering of others. Through study and practice, we are advancing our wisdom to better recognize the true nature of reality and be able to assist others in realizing this for themselves.

After a while, you may start to realize that your attitude and views have changed. You see things differently than before. This is you slowly awakening your Buddha eyes and understanding what it is to be a Buddha. Word of caution, do not seek this realization all the time. When we actively concentrate, our mind takes over and skews your view in one direction, making us out of balance. We always want to be in the middle of both mind and body (heart) so that we can utilize our innate power within ourselves to combine with the conscious mind. With further practice, your Buddha eyes will help guide you with your further development and ability to help others.

Keep practicing and learning to increase the Buddha eyes within yourself.

---

**New Building Fund** commemorating the 800<sup>th</sup> Anniversary of Nichiren Shonin's Birth

749 *shakyo* tracing Chapter 25 of the Lotus Sutra offered, **24,450,000** times of Chanting *Odaimoku* offered, As of December 23, 2022

*Thank you very much! Please continue your support.*

---

*From the High Desert, I Bring you Good News!*

## Football Crowd

Shoda Kanai

After a couple of years, I was finally able to attend a college football game in the new Allegiant Stadium, home of the Las Vegas Raiders. As most games are on Sunday, going to a game are challenging.

As with any large sporting event, the two opposing sides create as much noise as possible to help distract the other team. This especially works in football. If the quarterback cannot communicate the play then the players will run the wrong route, thus leading to either an incomplete pass or busted play.

Same goes when my team scores, there is loud cheering and adulation. On the flip side, if the opposing team scores, there is consternation and silence. There is the thrill of victory and the agony of defeat.

This is a special bond when large crowds get together to root for a team. There is oneness and energy that is felt throughout the game. This is also same with the sangha.

Though right now gathering at the temple is limited, meeting and chanting together brings about the same energy of togetherness. Our combined voices add into one louder voice, which can carry further and reach the higher realms where the Buddha, Nichiren Shonin, and protective deities reside. We feed off of each other, resulting in a feeling of tranquility. This higher energy vibration brings us together and helps heal the soul, removing our bad karma.

If you get a chance, please stop the temple and let us chant together with one voice.



## EVENTS

### January

1 <sup>st</sup> (Sun) 10:30 a.m.	New Year's Day <i>Kito</i> Blessing
8 <sup>th</sup> (Sun) 10:30 a.m.	Monthly <i>Kito</i> Blessing
15 <sup>th</sup> (Sun) 10:30 a.m.	<i>Shodai-gyo</i> (Chanting Meditation)
22 <sup>nd</sup> (Sun) 10:30 a.m.	Safe Driving <i>Kito</i> Blessing
29 <sup>th</sup> (Sun) <b>No Service</b>	<b>5th Sunday</b>

### February

5 <sup>th</sup> (Sun) 10:30 a.m.	<i>Hoshimatsuri</i> / <i>Setsubun</i> Service
12 <sup>th</sup> (Sun) 10:30 a.m.	Buddha's Nirvana /
	Nichiren Shonin's Birthday Service
19 <sup>th</sup> (Sun) 10:30 a.m.	English Service
26 <sup>th</sup> (Sun) 10:30 a.m.	<i>Shodai-gyo</i> (Chanting Meditation)

\*\*\* Join in every Wednesday night at 6 p.m. for **Tea Time with a Priest** to have your questions answered. Email temple for zoom ID and password \*\*\*

\*\*\* Those interested in Study Class and/or Counseling, please contact the temple to make arrangements \*\*\*